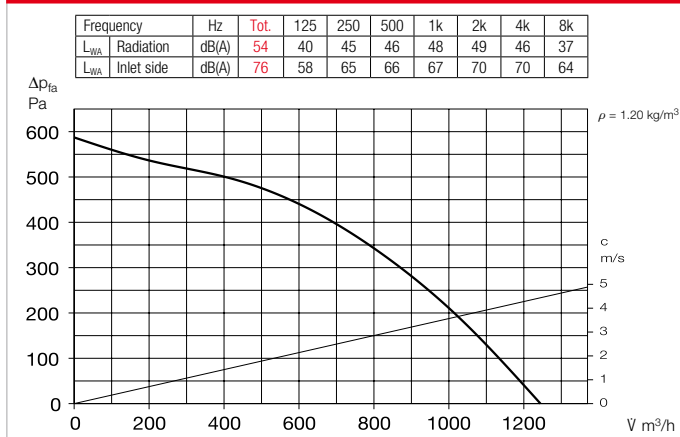
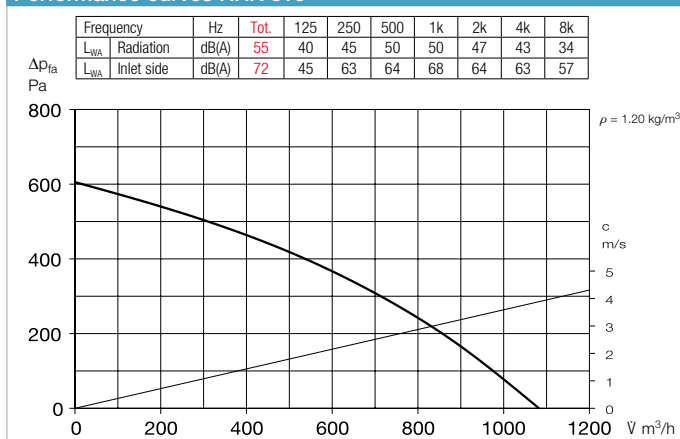


Performance curves RR 315



Performance curves RRK 315



References

	Page
Techn. description	360
Selection table	361
Planning information	14 ff.
Modular system	358

Other accessories

	Page
Filter, heating elements and silencers	481 ff.
Temperature control systems for heating elements	487, 491 ff.
Flexible ventilation ducts, ventilation grilles, fittings, roof outlets	561 ff.
Disc valves	582 ff.
Speed controllers, controllers and switches	599 ff.

Accessories

Pipe clamp connectors

BM 315 Ref. no. 05080
For structure-borne noise-free connection of fan and piping and for suspension (1 set = 2 pcs). Mount ventilation duct and fan connector at a distance and fold sleeve over during installation.

Mounting bracket for RR

MK 4 Ref. no. 05824

Mounting bracket for RRK

MK 3 Ref. no. 05823

Made of galvanised steel sheet.

External wall shutter

VK 315 Ref. no. 00760

Automatic made of plastic, light grey.

External wall cover grille

RAG 315 Ref. no. 00752

Made of plastic, light grey.

Protection grille

SGR 315 Ref. no. 05068

For inlet and outlet side installation. Made of galvanised steel.

Duct shutter

RSK 315 Ref. no. 05674

Automatic, made of metal.

Flexible cross talk silencer

FSD 315 Ref. no. 00681

Made of aluminium pipe with double-sided plug-in connectors. Sound insulation lining 50 mm thick, installation length 1 m.

Air filter box

LFBR 315 Coarse 70%* 08581

LFBR 315 ePM1 50%* 08535

Air filter with large surface area, for installation in pipeline.

Electric heating element

EHR-R 6/315 6.0 kWNo.08713

– with integrated temp. control

EHR-R 6/315 TR 6.0 kWNo.05301

Room or duct sensor (TFK/TFR, Accessories) required.

Temperature control system for electric heating element

EHR-R

EHS Ref. no. 05002

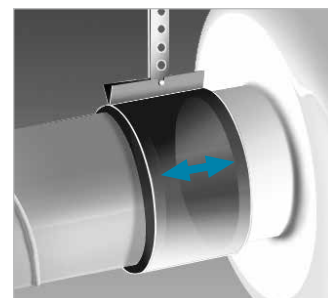
Warm water heating element

WHR 315 Ref. no. 09484

Compact heat exchanger for installation in duct system.

Temperature control system for warm water heating element

WHS HE Ref. no. 08319



* See product page 484 for detailed description.