

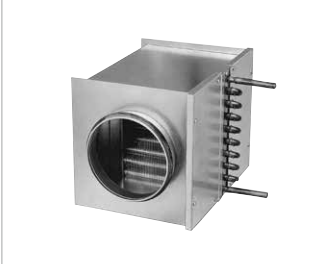
Shutters



Silencer



Warm water heating element



Door ventilation grilles



Cleaning set



Air temperature control



Hydraulic unit



Ø 100	Ø 125	Ø 160	Ø 200	Ø 250	Ø 315	Ø 355	Ø 400
Flexible connecting sleeve – For acoustic decoupling, incl. 2 pcs. hose clamps							
FM 100 01681	FM 125 01682	FM 160 01684	FM 200 01670	FM 250 01672	FM 315 01674	FM 355 01675	FM 400 01676
Duct shutters – Self-actuating or **motorised, installed in pipeline, casing made of galvanised steel sheet or *plastic							
RSKK* 100 05106	RSKK* 125 05107	RSK 160 05669	RSK 200 05074	RSK 250 05673	RSK 315 05674	RSK 355 05650	RSK 400 05651
				RVM** 250 02576	RVM** 315 02578	RVM** 355 02579	RVM** 400 02580
KAK 100 04097	KAK 125 04098	KAK 160 04099	KAK 200 04100	Cold smoke shutter			
Flexible cross talk silencer FSD¹⁾, duct silencer RSD¹⁾ – Galvanised steel sheet				Duct silencer SDE see page 165			
FSD 100 00676	FSD 125 00677	FSD 160 00678	FSD 200 00679	FSD 250 00680	FSD 315 00681	FSD 355 00682	FSD 400 00683
—	—	—	—	RSD 250 08739	RSD 315 08745	RSD 355 08748	RSD 400 08751

¹⁾ See product page for average insulation dimension.

		Compatible with duct	Air-side data					Water-side data ¹⁾		Weight	Compatible temperature control system	
			Heat output		Δ T air		at V	Pressure loss	with water volume		Type	Ref. no.
Type	Ref. no.	Ø mm	kW ¹⁾	kW ²⁾	K ¹⁾	K ²⁾	m³/h	Δp _w kPa	l/h	approx. kg		
WHR 100	09479	100	1.9	0.9	35	17	150	1	84	3.2	WHST 300 T50	08820
WHR 125	09480	125	2.6	1.1	29	13	250	2	115	3.2	WHST 300 T50	08820
WHR 160	09481	160	5.5	3.1	38	22	400	11	245	4.9	WHST 300 T50	08820
WHR 200	09482	200	7.2	4.1	33	19	600	17	317	4.9	WHST 300 T50	08820
WHR 250	09483	250	10.7	6.0	37	21	800	8	470	6.9	WHSH HE 24 V	08318
WHR 315	09484	351	18.3	10.4	36,2	21	1400	9	810	9.0	WHSH HE 24 V	08318
WHR 400	09524	400	26.2	15.0	36	21	2000	11	1060	12.5	WHSH HE 24 V	08318

Door ventilation grilles

Unobtrusive, sight screening ventilation grille made of break-resistant plastic for installation in door leaf.

See product page for detailed description.

LTGW Ref. no. 00246
Made of plastic, white.

LTGB Ref. no. 00247
Made of plastic, brown.

Cleaning set for air distribution systems flexpipe and renopipe.

The universal cleaning set KWL-RS is ideally suitable for cleaning the **flexpipe** duct systems (DN 75, DN 63) and the **renopipe** air distribution system (DN 100). Application is possible either by pushing (for short distances) or pulling. In case of longer duct sections or narrow bends, the round nylon brush is simply pulled in the

direction of the distribution box, where the 90° bend is used for the intake connection. This is used to easily remove the dust loosened by the round nylon brush with a commercially available vacuum cleaner.

Delivered in a practical transport bag.

Delivery: Per 1 pc.

- Reel with flexible GFK wire (20 linear m.)
- Round brushes DN 63, 75, 100
- 90° bend and seal for intake connection DN 56
- Adapter DN 56/40, DN 56/32.

KWL-RS Ref. no. 02797

Air temperature control for KWL units with PWW post-heater.

For air heating control of the PWW post-heater integrated in KWL WW types. Consists of thermostat with remote adjustment and remote sensor. Simple, cost-effective and quick-to-install solution.

Temperature range 8 – 38 °C.

WHST 300 T38 Ref. no. 08817

Air temperature control



Air temperature control for warm water heating element WHR.

Ideal for use as supply air heater. Consists of thermostat incl. duct temperature sensor (with 2 m capillary tube) and valve. Provides a constant supply air temperature. Simple, cost-effective and quick-to-install solution.

Temperature range 20 – 50 °C.

WHST 300 T50 Ref. no. 08820

Hydraulic unit

Controls the water temperature of the PWW heating element using a three-way valve actuator 24 V (0-10 V) and thus the heat output transferred to the air. Delivered as a complete unit, incl. VL-/RL temperature display, circulating pump and flexible connection hoses.

WHSH HE 24 V (0-10 V) No. 08318

Weekly timer



Weekly timer

Digital timer with LCD display for autom. control of op. mode, programmable for every weekday. Surface and flush-mounted install. Dim. mm (WxHxD) 84 x 84 x 40

WSUP Ref. no. 09990

For switch cabinet installation (2 space units required).

Dim. mm (WxHxD) 36 x 90 x 63

WSUP-S Ref. no. 09577

WHR: The values apply for supply air temp. 0 °C and flow/return temperatures: ¹⁾ 90/70 °C, ²⁾ 60/40 °C.