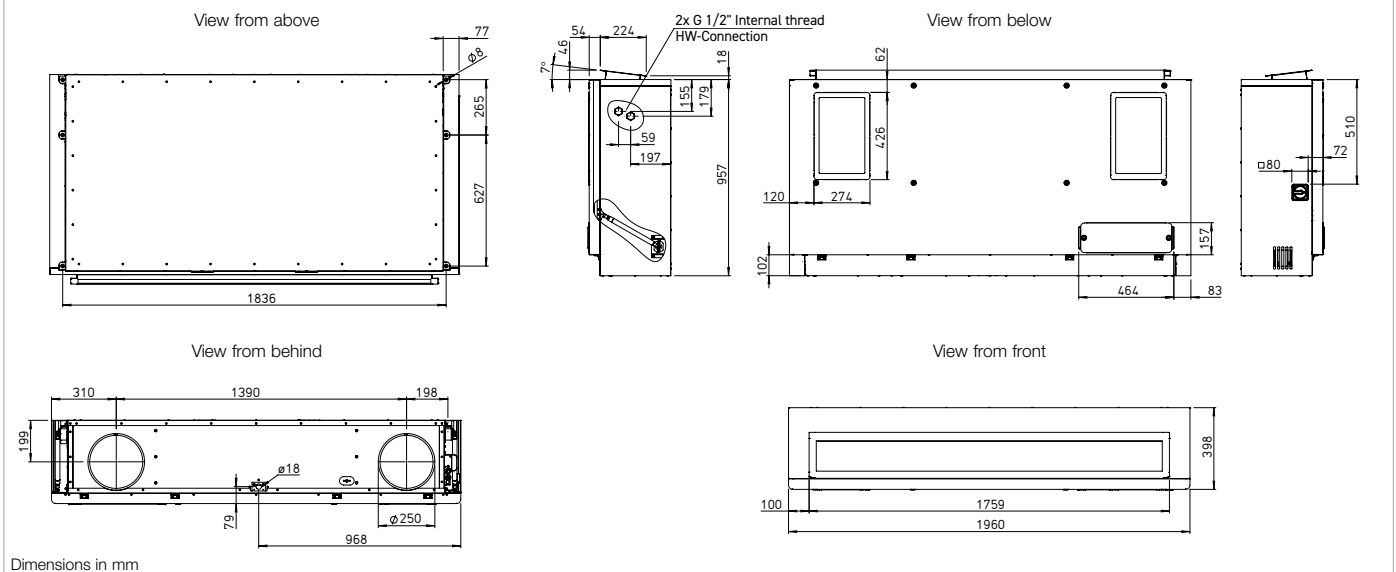


### Dimensions KWL YOGA Style 400



#### ■ Air filter, VDI-certified

Clean intake air flow via ISO ePM<sub>1</sub> 60% filter (F7). Two filters for extract air: ISO Coarse 60% (G4); optionally available: ISO ePM<sub>10</sub> 60% (M5).

#### ■ Summer operation

Equipped with automatic bypass function (bypassing the heat exchanger to use the cool night air for controlling the room temperature) as standard.

#### ■ Heat exchanger frost protection

The standard frost monitoring automatically regulates the supply air flow and the built-in electrical preheater, depending on the selected equipment.

#### ■ After-heater

Unit variants with integrated post-heating (warm water or electrical after-heater) ensure the comfortable and energy-efficient post-heating of supply air. The target supply air temperature is set on the control element. The use of hydraulic unit type WSH HE 24 V (0-10V), (accessories) is recommended for controlling the warm water heating element.

#### ■ Power control

The included comfort control element with touch functionality and easy menu navigation provide the following functions:

- ☐ Demand-oriented ventilation, optionally with CO<sub>2</sub>, VOC, or humidity sensor (1 sensor can be connected).
- ☐ Initial commissioning (automatic determination of system characteristic curve).
- ☐ Fire alarm contact connection.
- ☐ Weekly or daily programme.
- ☐ Automatic bypass (summer operation: use of cool night air).
- ☐ Pressure monitoring of filter contamination.
- ☐ Displays required filter replacement.
- ☐ 5 password-protected function levels can be configured.
- ☐ Control via central building control system possible (ModBus RTU and ModBus TCP, BACnet)
- ☐ Including control line cable (10 m)

#### ■ Electrical connection

After removing the left side panel, the connection box is easily accessible on the outside of the casing. The isolator/main switch is located on the outside of the unit for easy maintenance. It can be locked using a padlock to prevent unauthorised access.

#### ■ Sensors

**Infrared motion sensor** for detecting the presence of people in the room.

**BWM** Ref. no. 08323

**CO<sub>2</sub> sensor** for measuring the CO<sub>2</sub> concentration.

**AIR1/KWL-VOC 0-10V** No. 20250

**VOC sensor** for measuring the mixed gas concentration (VOC).

**AIR1/KWL-CO<sub>2</sub> 0-10V** No. 20251

**Humidity-temperature sensor** for measuring the relative air humidity.

**AIR1/KWL-FTF 0-10V** No. 20252

#### Control line cable

**KWL-SL eC 5m** Ref. no. 40179

**KWL-SL eC 10m** Ref. no. 40180

Control line cables in 5 or 10 meters for sensors.

#### ■ Installation accessories

**Flush-mounted/wall-mounted siphon**

**KWL-KS WE** Ref. no. 40064

**Ball-tube siphon**

**KWL-KS** Ref. no. 40065

**Condensate submersible pump**

**KWL-KP-I** Ref. no. 40472

**Wall bracket console set** for combined wall-ceiling installation.

**KWL YOGA-WH** Ref. no. 40067

**Hydraulic unit**

**WSH HE 24V (0-10V)** No. 08318

**Facade grille, circular**

**FGR 250** Ref. no. 40181

#### ■ Filter, VDI-certified

##### Spare air filter (extract air)\*

ISO Coarse 60% (G4). Unit = 1 pc.

**ELF-KWL YOGA 400/VDI/Coarse 60%**

Ref. no. 40687

##### Spare air filter (extract air)\*

ISO ePM<sub>10</sub> 60% (M5). Unit = 1 pc.

**ELF-KWL YOGA 400/VDI/ePM10 60%**

Ref. no. 40690

##### Spare air filter (intake air)

ISO ePM<sub>1</sub> 60% (F7). Unit = 1 pc.

**ELF-KWL YOGA 400/VDI/ePM1 60%**

Ref. no. 40693

\*2 extract air filters are required per unit.

**Attention:** For spare air filters of older unit generations (orders before March 2023): Please contact us at [export@heliosventilatoren.de](mailto:export@heliosventilatoren.de)

#### ■ Important note

Further information on accessories can be found on page 148.